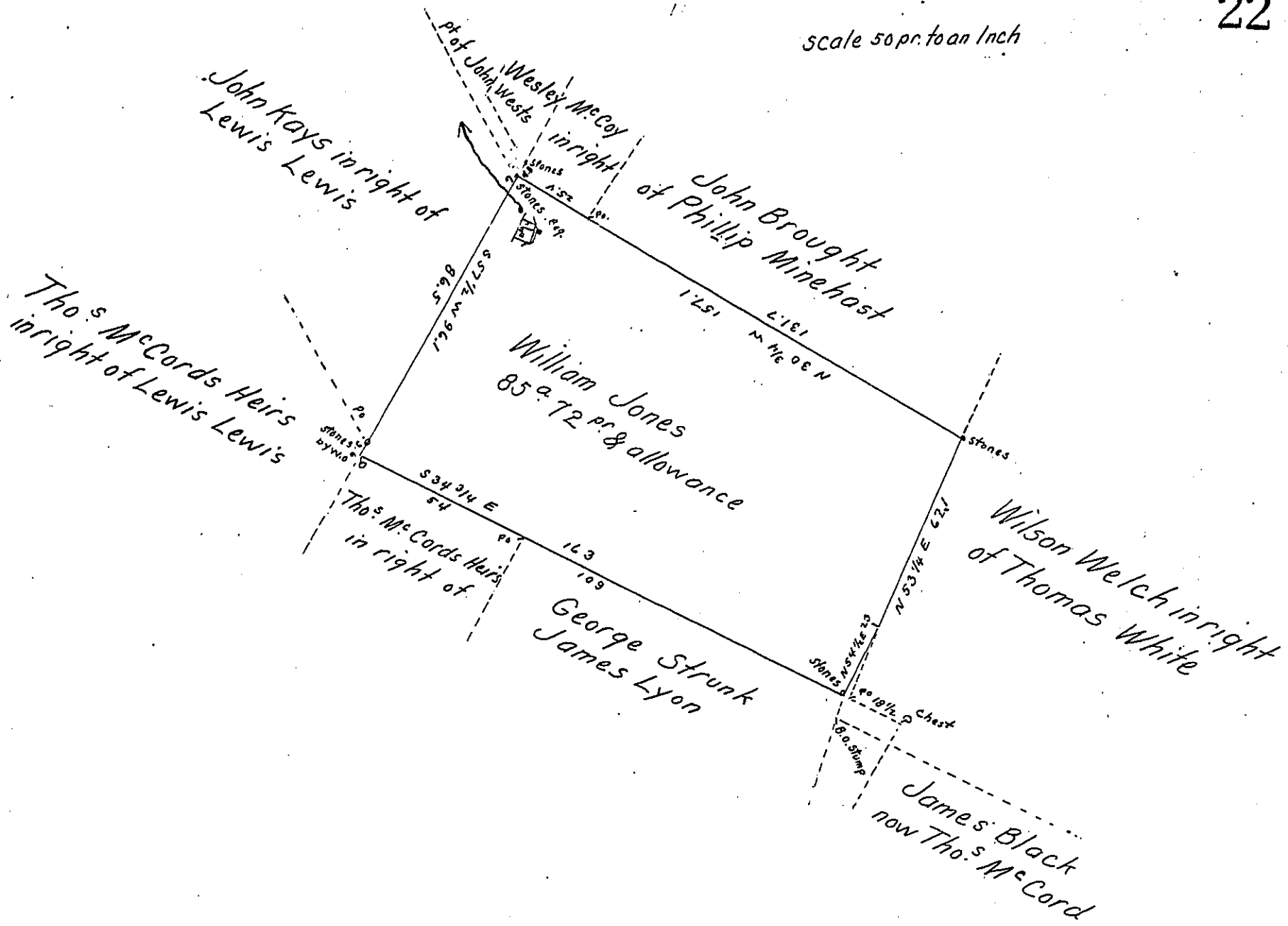


scale 50 pr. to an Inch



A Draught of 85^a 72 perches of land with allowance of 6 per cent for Roads &c. Situate in Granville Township Mifflin County which appears to have been Surveyed August 17th 1796 in pursuance of a warrant to William Jones for 200^a dated March 24th 1796. Examined by the lines on the ground January 20th 1859 & found as above represented.

To John Rowe Esq }
 Surveyor General of Penna }

John Swartzell C.S.

Note A Tenant house about 20 feet square with a family residing therein & about twelve acres of land cleared & fenced. Improvement said to have been commenced about fifteen years since.

J.S.

IN TESTIMONY that the above is a copy of the original remaining on file in the Department of Internal Affairs of Pennsylvania, made conformably to an Act of Assembly approved the 16th day of February, 1833, I have hereunto set my Hand and caused the Seal of said Department to be affixed at Harrisburg, this fourth day of May 1905.

Secretary of Internal Affairs.